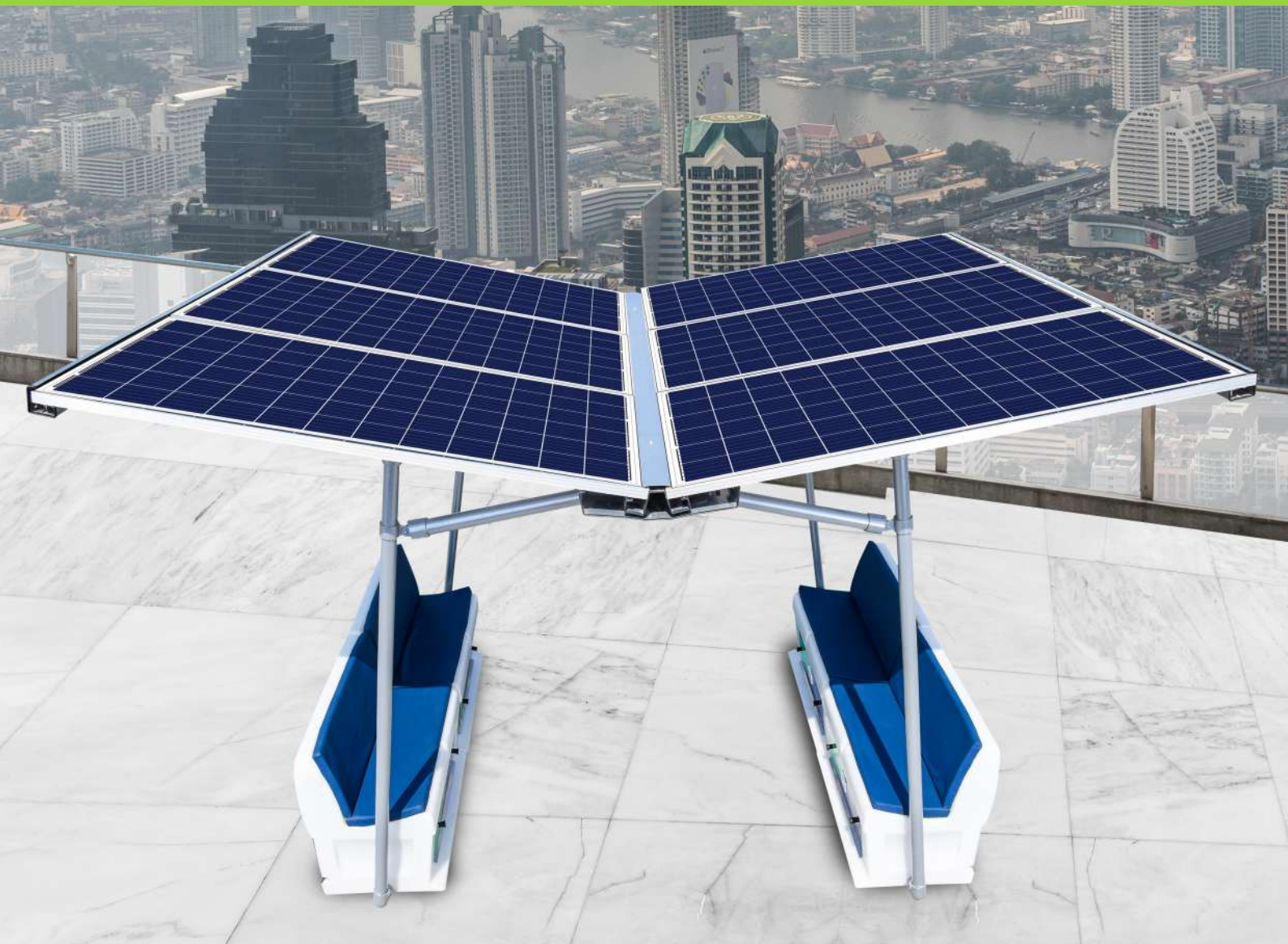


SERVPORT

The Future of Portable Solar Solution
offering Power Generation & Storage



WHY SERVOTECH?

Servotech contributes to society by providing the best green energy and renewable products with 100% customer satisfaction, which helps in reducing global warming. Through business benefits, we provide the best plant and infrastructure to the employees for producing the best products; we also provide better mental and financial life to them and their families. Through profits, we fulfill our corporate social responsibility and satisfy shareholders through profit.

सर्वोटिक 100% ग्राहक संतुष्टि के साथ सर्वोत्तम हरित ऊर्जा और नवीकरणीय उत्पाद प्रदान करके समाज में योगदान देता है, जो ग्लोबल वार्मिंग को कम करने में मदद करता है। व्यावसायिक लाभों के माध्यम से, हम कर्मचारियों को सर्वोत्तम उत्पादों के उत्पादन के लिए सर्वोत्तम संयंत्र और बुनियादी ढांचा प्रदान करते हैं; हम उन्हें और उनके परिवारों को बेहतर मानसिक और वित्तीय जीवन भी प्रदान करते हैं। लाभ के माध्यम से, हम अपनी कॉर्पोरेट सामाजिक जिम्मेदारी को पूरा करते हैं और लाभ के माध्यम से शेयरधारकों को संतुष्ट करते हैं।



**A Credible,
Established Brand**



**Focus on
Quality**



**Certified and
Affiliated**



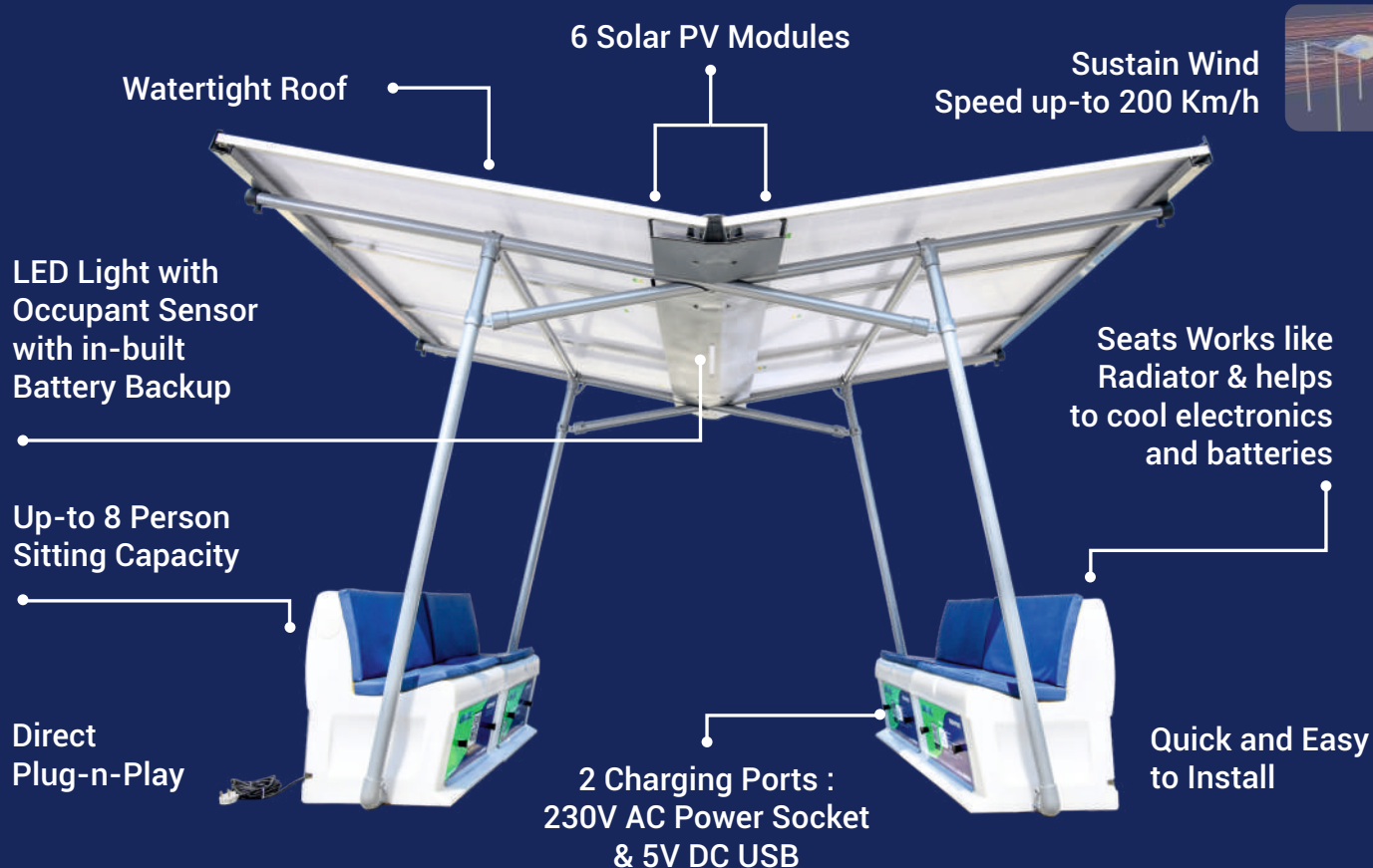
**Expert Driven
Process**

Our extensive range of varied products and services has shown for a far-reaching impact both individually and collectively, and these numbers are only improving:

10 Million+ Satisfied Customers	10+ Countries Covered	100+ Major PSU Projects	20+ Medical Institutions	2% Reduced CO ₂ Footprint
25+ Educational Facilities	600+ Cities Covered	9500+ Healthy Homes	100+ Corporate Partners	6000+ Petrol Pump Projects

ABOUT SERVPORT

'Servport' is a Solar PV system which uses sunlight to generate electricity. It is a portable plug and play system which can be purchased, installed and can be made fully operational within few hours. All the components of Servport are standardized and with very high quality. It generates 8-10 units of electricity from solar panels and converts it into AC through an inverter and connects with a 16 Amp socket through one plug. The Servport does not require any net-metering related agreement before installation, as it is designed for 100% self consumption and no power is fed back to the grid.



HOW IT WORKS

SERVPORT comes up with assured quality and reliability and will be distributed through DISCOMS. It doesn't require mandatory net metering mechanism.



Order

Order your SERVPORT in few simple steps



Assemble

The SERVPORT can assembled with DIY instructions or through Servmitra



Connect

Just plug the SERVPORT to critical loads of your home

BENEFITS

Servport is an Internationally designed PV system that transforms your space into a space of worth. Below are few key benefits.



Cost-Effective

Slash your power costs by 30 to 50%



Environment friendly

Reduces your carbon footprint



Low Maintenance

Smart devices ensures little or no maintenance costs



Enhanced Product Life

Covers warranty and guarantee for 25+ years



Return of investment in 5-6 years

Save your high cost of power in upper slab



Quality and Safety compliance

As per International standards



All-Weather Friendly

ServPort is perfectly compatible with the Indian weather



Easy to Install and Re-Install

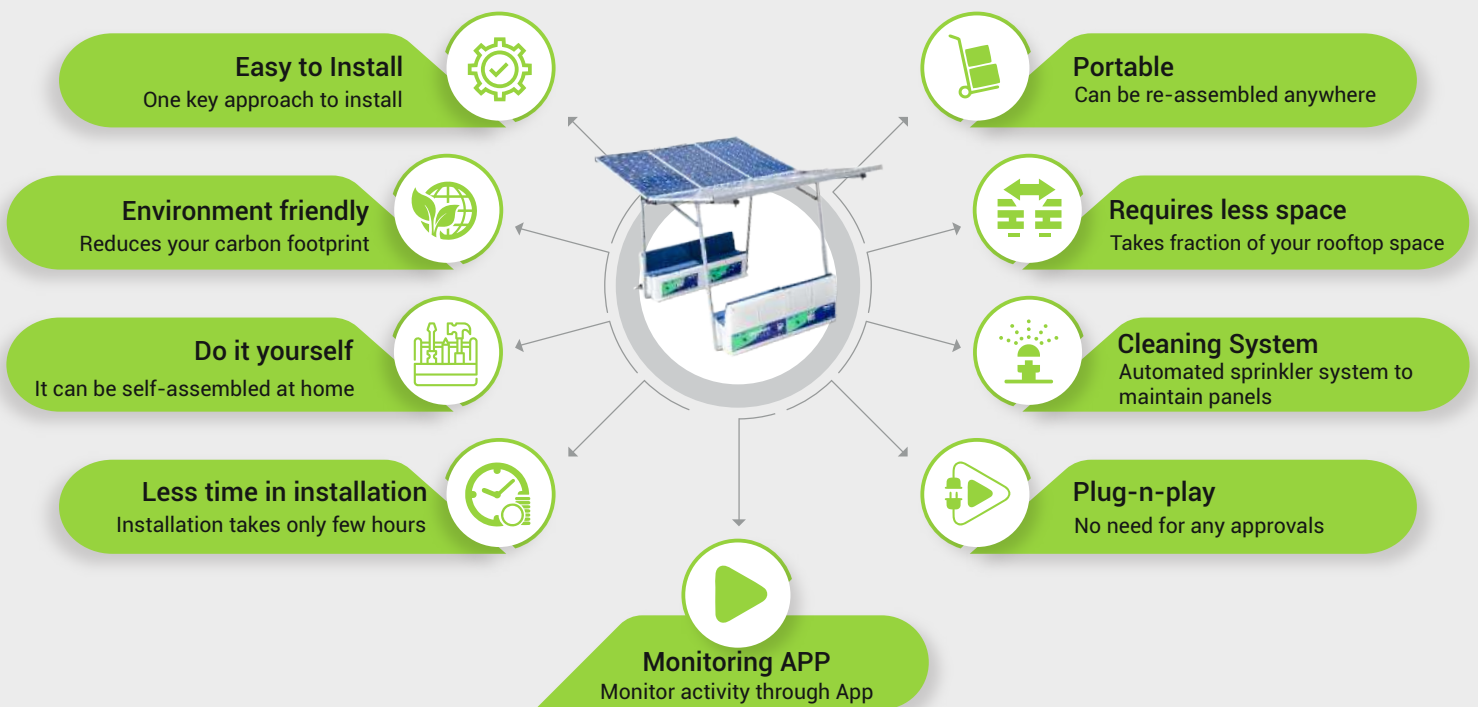
Carry along when you relocate





FEATURES

Servport is your small step towards the green revolution for a better future



ServPort vs Traditional PV Rooftops



ServPort easily edges past traditional PV systems on a number of levels:

Features	Servport	Traditional system
Type of Installation	Portable	Fixed
Installation time	Within a Day	10-15 Days
Interconnection with grid	Direct Plug into 16 Amp socket	Separate electrical wiring
Back-up power	Critical load can work during grid outage #	No backup power
Netmetering from DISCOM	Not required	Required
Meter	No change in meter required	Net meter (Bi-directional)
Cleaning	Self-cleaning	Manual cleaning
Space required for installation	10 sq. m	20 sq. m Approximately
System Quality	Standardized Quality	Homogeneity in quality is absent due to various OEMs
Monitoring & Communication	Through PV Port App and Interface with DISCOM's CMS possible	Net monitoring or Manual

Backup support not applicable for ENERGY FOCUS version

OUR COLLECTION

We have customizable options to suit your needs



Energy Jet

With Bench
& Lithium Battery (4.8 kWh)



Energy Fortify

With Bench
& Lithium Battery (2.4 kWh)



Energy Wrap

With Bench &
SMF Battery (4.8 kWh)



Energy Collateral






With Bench &
SMF Battery (2.4 kWh)



Energy Focus

Without Battery and Bench

TECHNICAL SPECIFICATIONS

Serv Port Model		Serv Port - 1	Serv Port - 2	Serv Port - 3	Serv Port - 4	Serv Port - 5
Model		Energy Focus	Energy Collateral	Energy Wrap	Energy Fortify	Energy Jet
						
Description		2KW Solar pack which can generate electricity upto 8-10 killo watt per day across the year & provide you beautiful 4 X 3 sqmtr pavilion and also provide sitting upto 8 person				
Solar Panel	Solar panel 400Watt X 6 no.	S	S	S	S	S
Serv Port Structure	Super Imposed galvanised Structure Galvanized steel pipe 60 mm x 3.65, Hot Dip TUV certified Tubeclamps PV module rails, PV module bended cross bars, rain drain, screws with 5 yrs warranty (Dimension)	S	S	S	S	S
Micro Inverters	Micro Inverters Peak Power : 395 watt X 6 no.	S	N	N	N	N
Hybrid Offgrid Inverter	Hybrid Inverter 2000watt with ZeroExport	N	S	S	S	S
UV-Stabilized Benches	Latest watercooled - UV stabilized resin benches which help to manage electronics thermal temperature during summer & provide sitting upto 8 person(4 x Rotomoulded Benches -)	O	S	S	S	S
Battery Bank	Battery Bank (Sealed Maintenance Free) battery 2-3 Years	N	S(2.4)	S(4.8)	N	N
Battery Pack	LiFepo4 Battery pack (Battery Life 7-10 years)	N	N	N	S(2.4)	S(4.8)
Sprinkler	Sprinkler	O	O	O	O	O
Lighting Arrestor	Lighting Arrestor	O	O	O	O	S
Earthing Kit	Earthing Kit	O	O	O	O	S
Zero Export Device	Zero Export Device	O	O	O	O	S
Installation	Installation	A	A	A	A	A
Transportation	Transportation	A	A	A	A	A
Monitoring App	Monitoring App	S	S	S	S	S

Glossary - S: Standard | O: Optional | A: Additional | N: Not Available | 2.4/4.8: KW size of battery

IMAGES





Servotech Renewable Power System Limited

(Formerly known as Servotech Power Systems Limited)

Registered Office : 806, 8th Floor,
Crown Heights, Hotel Crowne Plaza,
Rohini, New Delhi - 110085

Ph: 011-41183116, +91 9818680033

 +91 9311313734

Email: servotech@servotechindia.com

Unit-1 Kundli Plant: 76A, Sector-57,
Revenue Estate, Kundli, Sonipat,
Haryana - 131028

Unit-2 Safiabab Plant: Killa No. 14/6/1/2
(0-3), 6/2/3 (5-13) Safiabab, Pana Paposhian,
Rai, Sonipat 131029 Haryana

www.servotech.in

