

A large array of solar panels is shown from a high-angle perspective, covering a wooden roof. The panels are dark blue with a grid of silver lines. The sky above is bright and hazy, with a warm, golden glow. A dark blue arrow-shaped graphic points to the right, containing the text.

Unlocking Innovative **Solar** Solutions

ABOUT SERVOTECH

Servotech is an NSE-listed company with over 18 years of experience specialising in the end-to-end production, procurement, and distribution of high-end, customer-focused solutions. Having established its business footprint as the leading provider of solar solutions including solar inverters, LED lighting commercial and domestic products, power-backup UPS and servo stabilizers, and UVC disinfection products, the organisation has also ventured into the EV charging segment with an aim to engineer India's EV tech-infrastructure from ground up.

Propelled by expertise, excellence, and next-gen innovation, Servotech is committed to making sustainable tech solutions more affordable and accessible to the masses. Having quickly gained a reputation for excellence and perfection, the organisation is widely regarded as a trustworthy and credible solutions provider, effectively establishing itself as a keystone entity. Beyond this, Servotech wants to surpass customer experience while substantially expanding, growing investor confidence, and maintaining sharp focus on quality.



A Credible,
Established Brand



Focus on
Quality



Certified and
Affiliated



Expert Driven
Process

Our extensive range of varied products and services has shown for a far-reaching impact both individually and collectively, and these numbers are only improving:

10 Million+ Satisfied Customers	10+ Countries Covered	100+ Major PSU Projects	20+ Medical Institutions	2% Reduced CO ₂ Footprint
25+ Educational Facilities	600+ Cities Covered	9500+ Healthy Homes	100+ Corporate Partners	6000+ Petrol Pump Projects



Range Available : 1kVA - 5kVA

SOLAR PCU PWM SERIES

ELEGANT SERIES

PLUS/UNIK

- True CV PWM
- LCD Display
- Advanced DSP Technology
- AI Charge Sharing
- 5 Stage Battery Charging

SOLAR PCU MPPT SERIES

FLARE

- True MPPT
- Configurable User Settings
- Advanced DSP Technology
- AI Charge Sharing
- Remote Monitoring IoT



Range Available : 1kVA -150kVA



Range Available : 5kVA - 150kVA

SOLAR INVERTER HYBRID SERIES

FUSION

- Bidirectional Inverter
- Flexibility in Design
- Grid Utilization
- Battery-Less Operation
- IGBT Based Rectifier
- Advanced Multiple DSP
- Supports Multiple Input



Range Available :
1KW-6KW Single Phase
5KW-100KW Three Phase

SOLAR PCU ONGRID SERIES

POWER GITTER SERIES

Dual/Multi MPPT Design with
Accurate MPPT Algorithm
Natural Cooling
Transformerless GT Topology
Export Power Block Function
R5485, Remote Monitoring (Wi-Fi/GPRS)

SOLAR TUBULAR BATTERIES

PPCP Container
High Porosity Envelop Separators
Microporous Ceramic Vent Plug
High Tensile, Acid Resistant
Polyester Gauntlet
Low Resistance Fasteners
Heavy Duty Terminal



Range Available : 40Ah - 250Ah

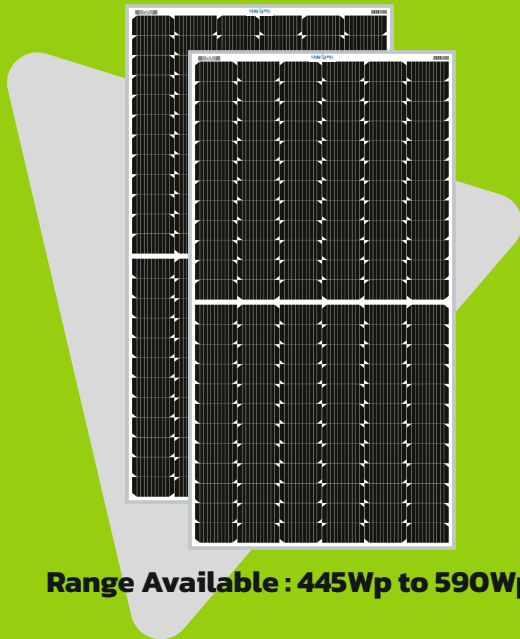


Customizable Range Available

Li-FePO4 BATTERIES

Low Discharge Rate
Less Heating
Increased Safety
Higher Charge Cycles

Wide Application in:
*Telecommunication, PV Generation,
E-Bike, EVs, Street Light, Power Tools
UPS & Backup*



Range Available : 445Wp to 590Wp

SOLAR PANELS **MONO HALF CUT**

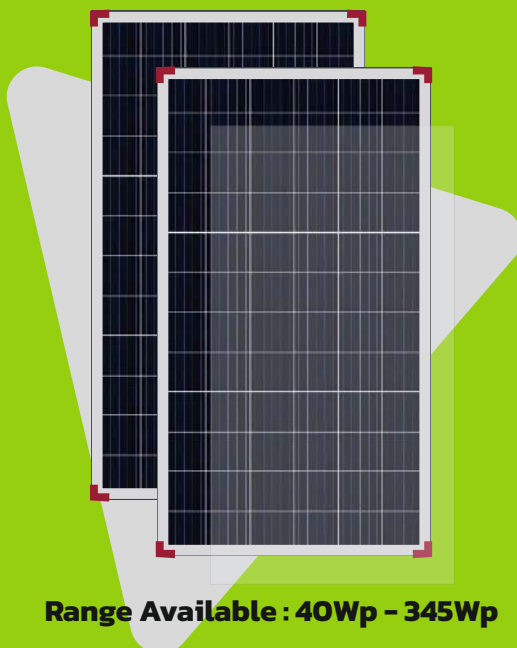
Upto 21.21% Efficiency
Round Ribbon for Better Efficiency
Minimizes Micro Cracks
M10 Mono PERC Cells
Works Even in Partial Light
Reduces BOS & Installation Cost

SOLAR PANELS **MONO PERC**

High Level Efficiency
Low Installation Costs
Space-Efficient
Longevity
Cost-Effective
Greater Heat Resistance



Range Available : 390Wp to 415Wp



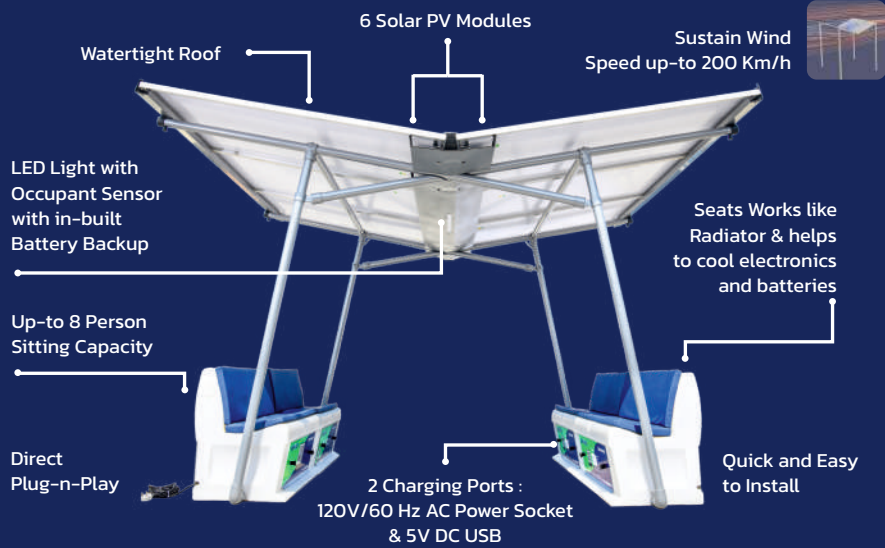
Range Available : 40Wp - 345Wp

SOLAR PANELS **POLY**

Improved Conductivity
Quick Manufacturing Cycle
Powerful Diffusion
Potential to be Grid-Free
Cost-Efficient

ServPort

The Future of Portable Solar Solution offering Power Generation & Storage



BENEFITS



Cost-Effective
Slash your power costs by 30 to 50%



Environment friendly
Reduces your carbon footprint



Enhanced Product Life
Covers warranty and guarantee for 25+ years



Return of investment in 5-6 years
Save your high cost of power in upper slab



All-Weather Friendly
ServPort is perfectly compatible with the Indian weather



Easy to Install and Re-Install
Carry along when you relocate



Low Maintenance
Smart devices ensures little or no maintenance costs



Cleaning System
Automated sprinkler system to maintain panels



Quality and Safety compliance
As per International standards



Do it yourself
It can be self-assembled at home



Plug-n-play
No need for any approvals



Monitoring APP
Monitor activity through App



Energy Jet
With bench & Lithium Battery (4.8 kWh)



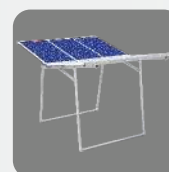
Energy Fortify
With bench & Lithium battery (2.4 kWh)



Energy Wrap
With bench & SMF Battery (4.8 kWh)



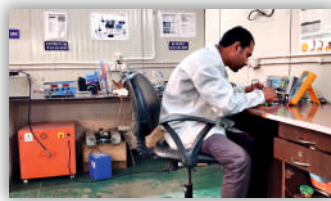
Energy Collateral
With bench & SMF battery (2.4 kWh)



Energy Focus
Without Battery and Bench

OUR R&D FACILITY

- State of the art production facility at Haryana (Kundli) for serving markets all over India.
- The production set up includes Manufacturing of LED Lights, Power Backup-products, Solar Products & more.
- Systematically planned and built to modern construction standards.
- Equipped with sophisticated assembly lines and are backed by a completely integrated in-house R&D Centre.
- Well-trained multi-skilled workforce assemble all the components on assembly lines.



KEY CLIENTELE





Servotech Renewable Power System Limited

(Formerly known as Servotech Power Systems Limited)

Registered Office : 806, 8th Floor,
Crown Heights, Hotel Crowne Plaza,
Rohini, New Delhi - 110085

Ph: 011-41183116, +91 9818680033

 +91 9311313734

Email: servotech@servotechindia.com

Unit-1 Kundli Plant: 76A, Sector-57,
Revenue Estate, Kundli, Sonipat,
Haryana - 131028

Unit-2 Safiabab Plant: Killa No. 14/6/1/2
(0-3), 6/2/3 (5-13) Safiabab, Pana Paposhian,
Rai, Sonipat 131029 Haryana

www.servotech.in

